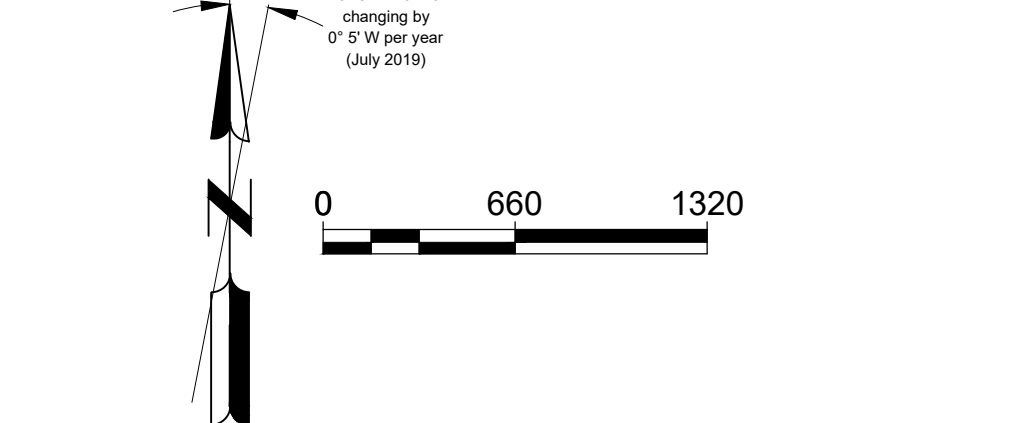
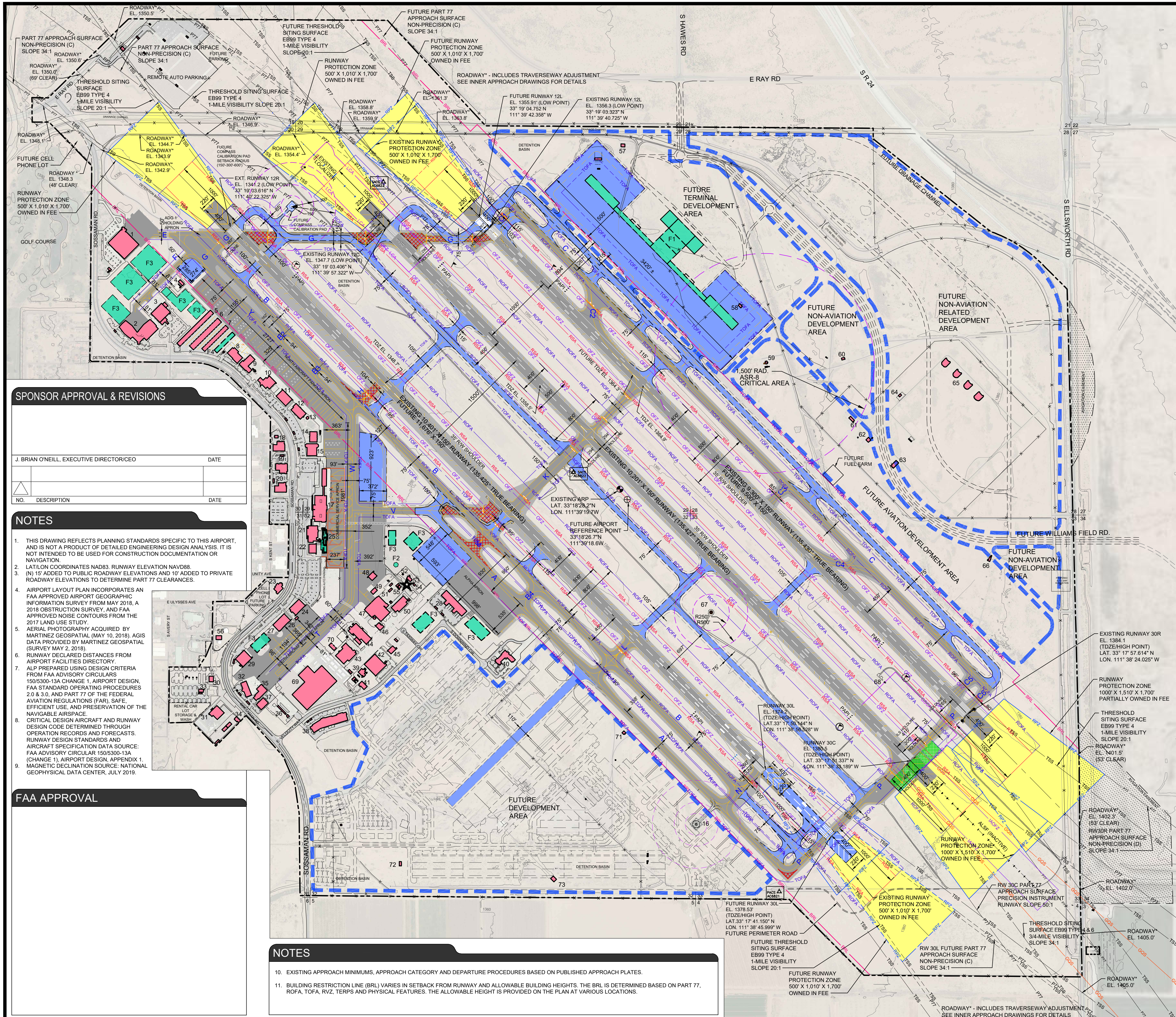


FACILITY LEGEND		
NO.	DESCRIPTION	TOP ELEVATION
1	HANGAR/OFFICE	EL. 1383.4
2	HANGAR/OFFICE	EL. 1382.3
3	HANGAR/OFFICE	EL. 1382.3
4	FIRE SUPPRESSION SYSTEM	EL. 1355.1
5	T-HANGAR	EL. 1365.7
6	T-HANGAR	EL. 1361.0
7	T-HANGAR	EL. 1359.4
8	HANGAR/OFFICE	EL. 1376.0
9	HANGAR/OFFICE	EL. 1377.9
10	HANGAR/OFFICE	EL. 1383.3
11	HANGAR/OFFICE	EL. 1382.9
12	GENERAL AVIATION CENTER (FBO/OFFICES)	EL. 1358.1
13	BUILDING (GAZEBO)	EL. 1358.1
14	AIRPORT ADMINISTRATION OFFICE BUILDING	EL. 1369.3
15	HANGAR/OFFICE	EL. 1378.5
16	COMPASS PAD	EL. 1365.0
17	TERMINAL BUILDING	EL. 1366.5
18	OFFICE BUILDING	EL. 1379.9
19	OFFICE BUILDING	EL. 1380.2
20	OFFICE BUILDING	EL. 1378.9
21	TERMINAL BUILDING	EL. 1371.6
22	HANGAR #24 (TO BE REMOVED)	EL. 1386.7
23	OFFICE BUILDING	EL. 1369.5
24	HANGAR	EL. 1383.7
25	TERMINAL ANNEX (TO BE REPLACED)	EL. 1365.6
26	HANGAR	EL. 1379.6
27	HANGAR (TO BE REPLACED)	EL. 1391.3
28	LINE SERVICES BUILDING	EL. 1392.2
29	OFFICE BUILDING	EL. 1391.1
30	OFFICE BUILDING	EL. 1358.9
31	INDUSTRIAL BUILDING	EL. 1363.9
32	OFFICE BUILDING	EL. 1379.7
33	CAR WASH AREA	EL. 1373.5
34	OFFICE BUILDING	EL. 1359.9
35	OFFICE BUILDING	EL. 1375.1
36	FUEL FARM	EL. 1360.6
37	OFFICE BUILDING	EL. 1360.6
38	OFFICE BUILDING	EL. 1375.5
39	BUILDING	EL. 1380.6
40	ARFF	EL. 1401.8
41	BUILDING	EL. 1368.1
42	OFFICE BUILDING	EL. 1383.1
43	OFFICE BUILDING	EL. 1375.6
44	BUILDING	EL. 1381.3
45	OFFICE BUILDING	EL. 1378.8
46	OFFICE BUILDING	EL. 1374.5
47	HANGAR/OFFICE	EL. 1406.9
48	BUILDING	EL. 1382.4
49	SHADE	EL. 1362.9
50	OFFICE BUILDING	EL. 1372.5
51	FIRE SUPPRESSION SYSTEM	EL. 1361.7
52	COMMUNICATIONS VAULT	EL. 1360.0
53	OFFICE BUILDING	EL. 1370.4
54	ATCT/AIRPORT BEACON	EL. 1474.3
55	BUILDING	EL. 1364.5
56	FIRE SUPPRESSION SYSTEM	EL. 1395.3
57	BUILDING (REMOVE/RELOCATE OFF AIRPORT)	EL. 1376.5
58	EAST LIGHTING VAULT (TO BE RELOCATED)	EL. 1385.3
59	ASR-8 (TO BE RELOCATED)	EL. 1381.5
60	BUILDING (TO BE REMOVED)	EL. 1386.7
61	BUILDING (TO BE REMOVED)	EL. 1387.6
62	BUILDING (TO BE REMOVED)	EL. 1390.0
63	BUILDING (TO BE REMOVED)	EL. 1391.7
64	BUILDING (TO BE REMOVED)	EL. 1395.7
65	BUNKER (TO BE REMOVED)	EL. 1401.8
66	RTR BUILDING (TO BE RELOCATED)	EL. 1392.7
67	TVOR	EL. 1400.9
68	ILS GLIDE SLOPE	EL. 1385.0
69	HANGAR/MANUFACTURING/OFFICE	EL. 1368.0' EST.
70	HUSH HOUSE	EL. 1370.1'
71	WEST LIGHTING VAULT	EL. 1374.6'
72	BUILDING (TO BE REMOVED)	EL. 1377.1'
73	BUILDING (TO BE REMOVED)	EL. 1403.5'
F1	BUILDING PASSENGER TERMINAL	
F2	FUTURE AIR TRAFFIC CONTROL TOWER	
F3	AIRPORT BUILDING	
F4	FUTURE T-HANGAR	



DRAWING LEGEND		
	EXISTING	FUTURE
AIRPORT PROPERTY LINE	---	N/A
AVIATION EASEMENT	---	N/A
AIRPORT BUILDINGS	---	---
AIRFIELD PAVEMENT	---	---
AIRFIELD PAVEMENT TO BE REMOVED	---	---
PAVED ROADS	---	---
RUNWAY PROTECTION ZONE	---	---
GLIDE PATH QUALIFICATION SURFACE	---	---
PART 77 APPROACH SURFACE	---	---
THRESHOLD SITING SURFACE	---	---
BUILDING RESTRICTION LINE	---	---
RUNWAY OBSTACLE FREE ZONE	---	---
INNER APPROACH OBSTACLE FREE ZONE	---	---
PRECISION OBSTACLE FREE ZONE	---	---
RADAR CRITICAL AREAS	---	---
GLIDE SLOPE CRITICAL AREA	---	---
LOCALIZER CRITICAL AREA	---	---
RUNWAY SAFETY AREA	---	---
RUNWAY OBJECT FREE AREA	---	---
TAXIWAY OBJECT FREE AREA	---	---
AIRPORT SECURITY FENCE (8' HEIGHT)	---	---
APRON/TAXIWAY/TAXILANE MARKING	---	---
AIRPORT BEACON	---	---
LIGHTED WIND CONE & SEGMENTED CIRCLE	---	---
WIND CONE	---	---
PRECISION APPROACH PATH INDICATOR (PAPI)	---	---
RUNWAY END IDENTIFIER LIGHTS (REIL)	---	---
AIRPORT REFERENCE POINT (ARP)	---	---
AIRPORT SURVEY CONTROL STATIONS	---	---
FUTURE DEVELOPMENT AREAS	---	---



SPONSOR APPROVAL & REVISIONS		
NO.	DESCRIPTION	DATE

- NOTES**
- THIS DRAWING REFLECTS PLANNING STANDARDS SPECIFIC TO THIS AIRPORT, AND IS NOT A PRODUCT OF DETAILED ENGINEERING DESIGN ANALYSIS. IT IS NOT INTENDED TO BE USED FOR CONSTRUCTION DOCUMENTATION OR NAVIGATION.
 - LAT/LON COORDINATES NAD83. RUNWAY ELEVATION NAVD83.
 - (N) 15' ADDED TO PUBLIC ROADWAY ELEVATIONS AND 10' ADDED TO PRIVATE ROADWAY ELEVATIONS TO DETERMINE PART 77 CLEARANCES.
 - AIRPORT LAYOUT PLAN INCORPORATES AN FAA APPROVED AIRPORT GEOGRAPHIC INFORMATION SURVEY FROM MAY 2018, A 2018 OBSTRUCTION SURVEY, AND FAA APPROVED NOISE CONTOURS FROM THE 2017 LAND USE STUDY.
 - AERIAL PHOTOGRAPHY ACQUIRED BY MARTINEZ GEOSPATIAL (MAY 10, 2018). AGIS DATA PROVIDED BY MARTINEZ GEOSPATIAL (SURVEY MAY 2, 2018).
 - RUNWAY DECLARED DISTANCES FROM AIRPORT FACILITIES DIRECTORY.
 - ALP PREPARED USING DESIGN CRITERIA FROM FAA ADVISORY CIRCULARS 150/5300-13A CHANGE 1, AIRPORT DESIGN, FAA STANDARD OPERATING PROCEDURES 2.0 & 3.0, AND PART 77 OF THE FEDERAL AVIATION REGULATIONS (FAR), SAFE, EFFICIENT USE AND PRESERVATION OF THE NAVIGABLE AIRSPACE.
 - CRITICAL DESIGN AIRCRAFT AND RUNWAY DESIGN CODE DETERMINED THROUGH OPERATION RECORDS AND FORECASTS. RUNWAY DESIGN STANDARDS AND AIRCRAFT SPECIFICATION DATA SOURCE: FAA ADVISORY CIRCULAR 150/5300-13A (CHANGE 1), AIRPORT DESIGN, APPENDIX 1.
 - MAGNETIC DECLINATION SOURCE: NATIONAL GEOPHYSICAL DATA CENTER, JULY 2019.

- FAA APPROVAL**
10. EXISTING APPROACH MINIMUMS, APPROACH CATEGORY AND DEPARTURE PROCEDURES BASED ON PUBLISHED APPROACH PLATES.
11. BUILDING RESTRICTION LINE (BRL) VARIES IN SETBACK FROM RUNWAY AND ALLOWABLE BUILDING HEIGHTS. THE BRL IS DETERMINED BASED ON PART 77, ROFA, TOFA, RVZ, TERPS AND PHYSICAL FEATURES. THE ALLOWABLE HEIGHT IS PROVIDED ON THE PLAN AT VARIOUS LOCATIONS.

\\CORP.MEADHUNT.COM\SHARED\FOLDERS\ENR\2327700\171799.01\TECH\CAD\AIRPORT\AIRPORT LAYOUT PLAN\AIRPORT LAYOUT DRAWING.DWG 3/20/2020 2:17:17 PM