

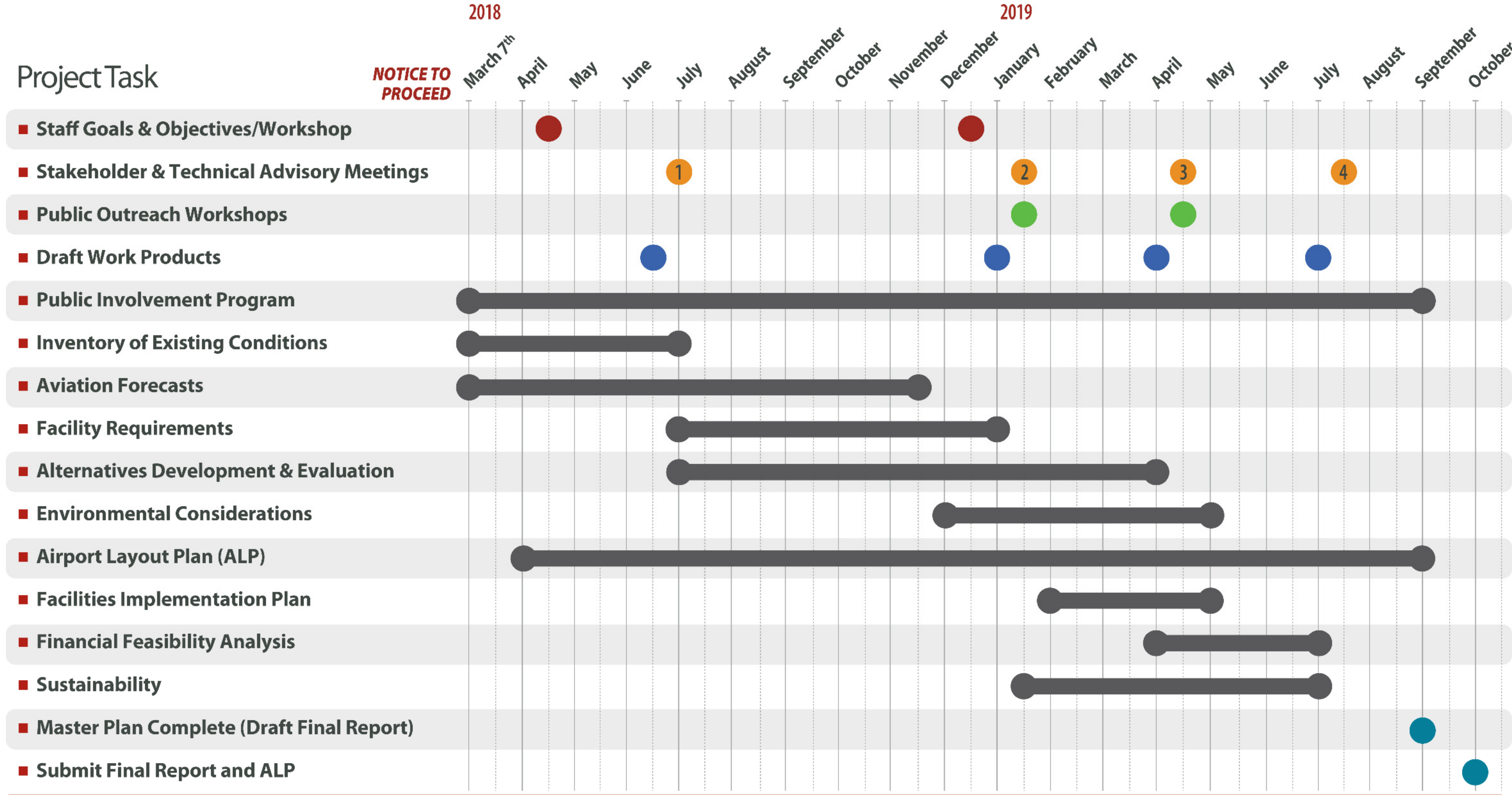


# Project Approach

- ✓ Follow FAA Guidance
- ✓ Building Block Process
  - Inventory
  - Forecasts
  - Facilities Needs Determination
  - Development Plan Formulation
  - Financial Plan



# Project Schedule Airport Master Plan

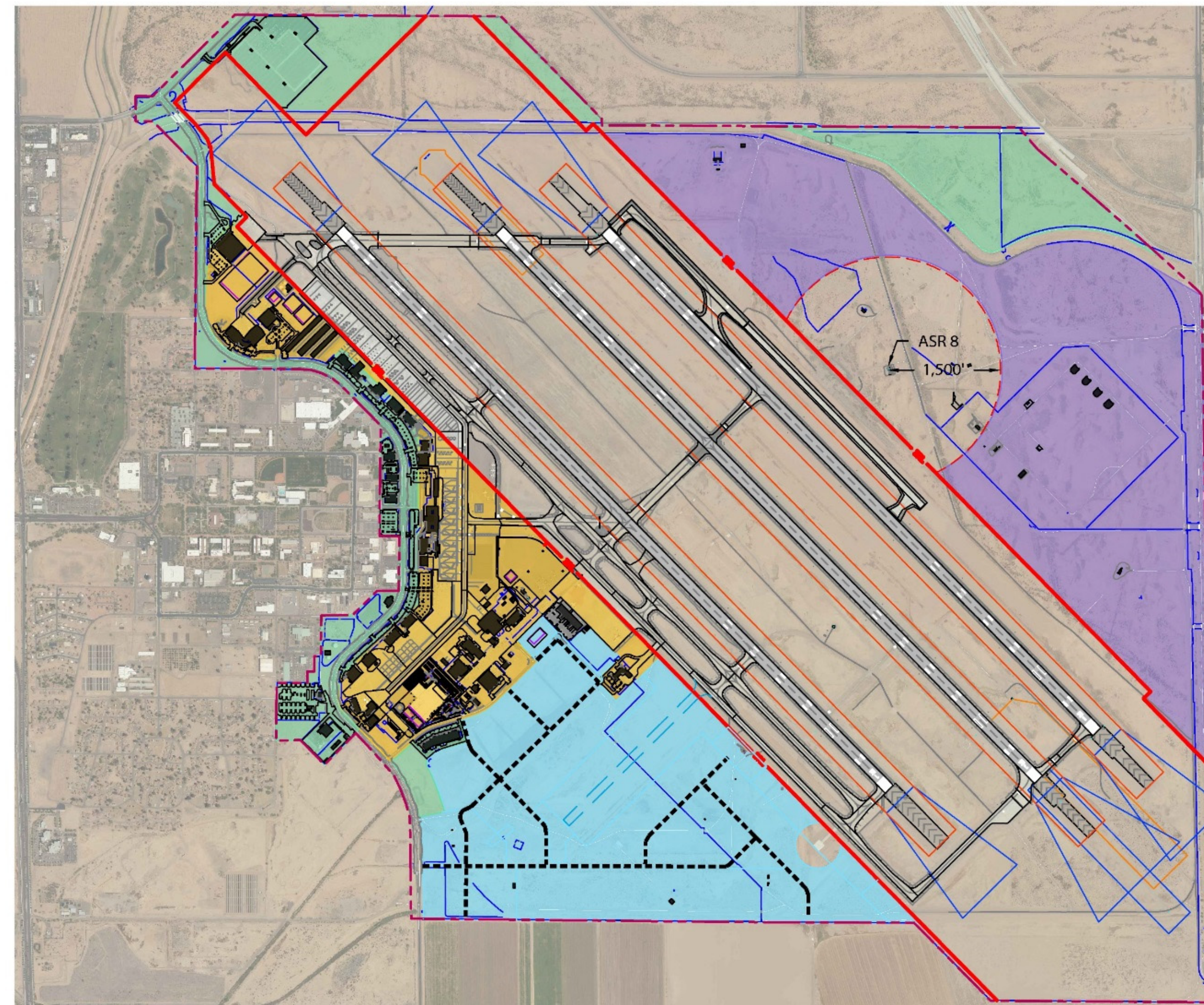


- Tasks
- Event Deadline
- Visioning Session
- Outreach Workshop
- Master Plan Working Group

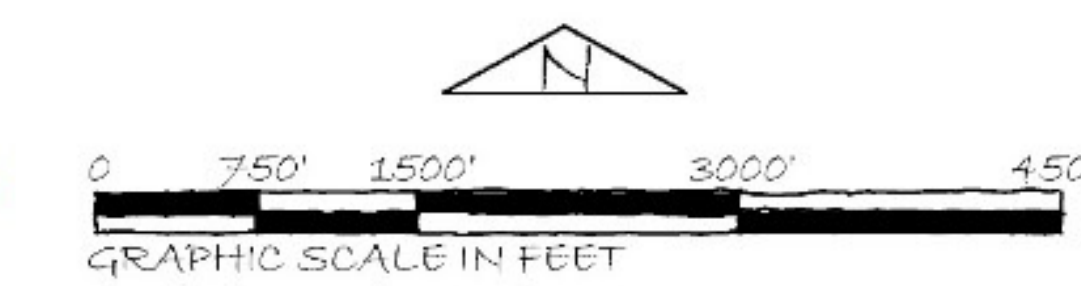
NOTE: Schedule updated November 28, 2018. Subject to change.

# On-Airport Land Use Analysis

Mead&Hunt



- Legend
- EXISTING AIRFIELD ACCESS DEVELOPMENT AREA
  - NO AIRFIELD ACCESS DEVELOPMENT AREA
  - POTENTIAL AIRFIELD ACCESS DEVELOPMENT AREA
  - SKYBRIDGE ARIZONA DEVELOPMENT AREA
  - POTENTIAL ROADWAY DEVELOPMENT
  - ASR 8 CRITICAL AREA
  - BUILDING RESTRICTION LINE (BRL)

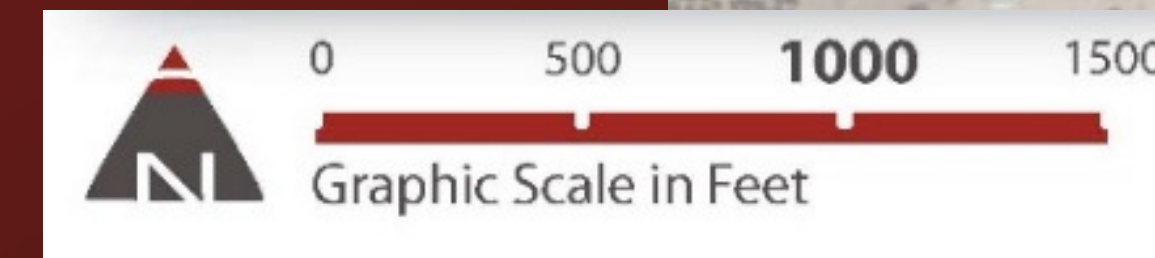
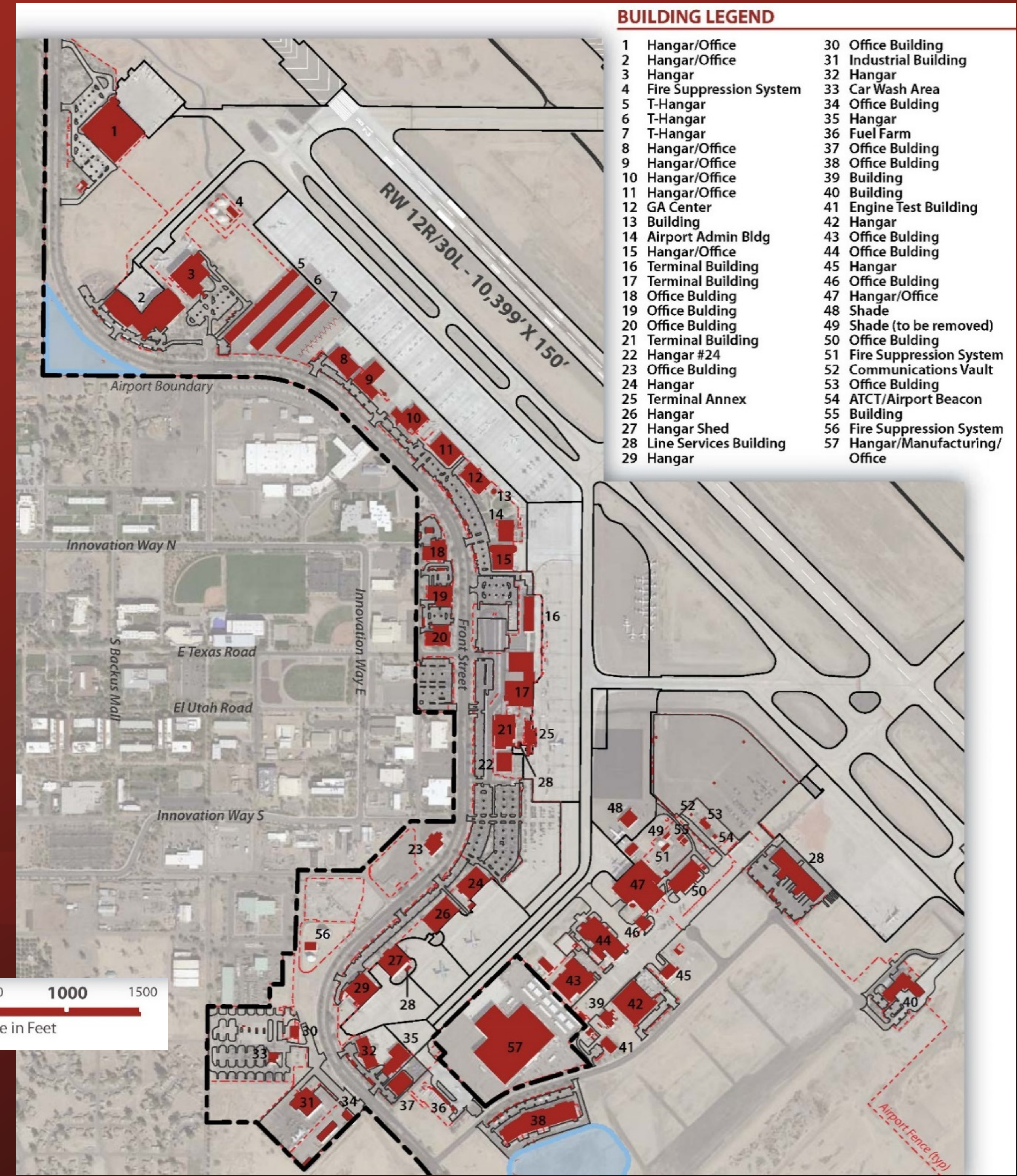


On-Airport Land Use Analysis

# Terminal Area Facilities



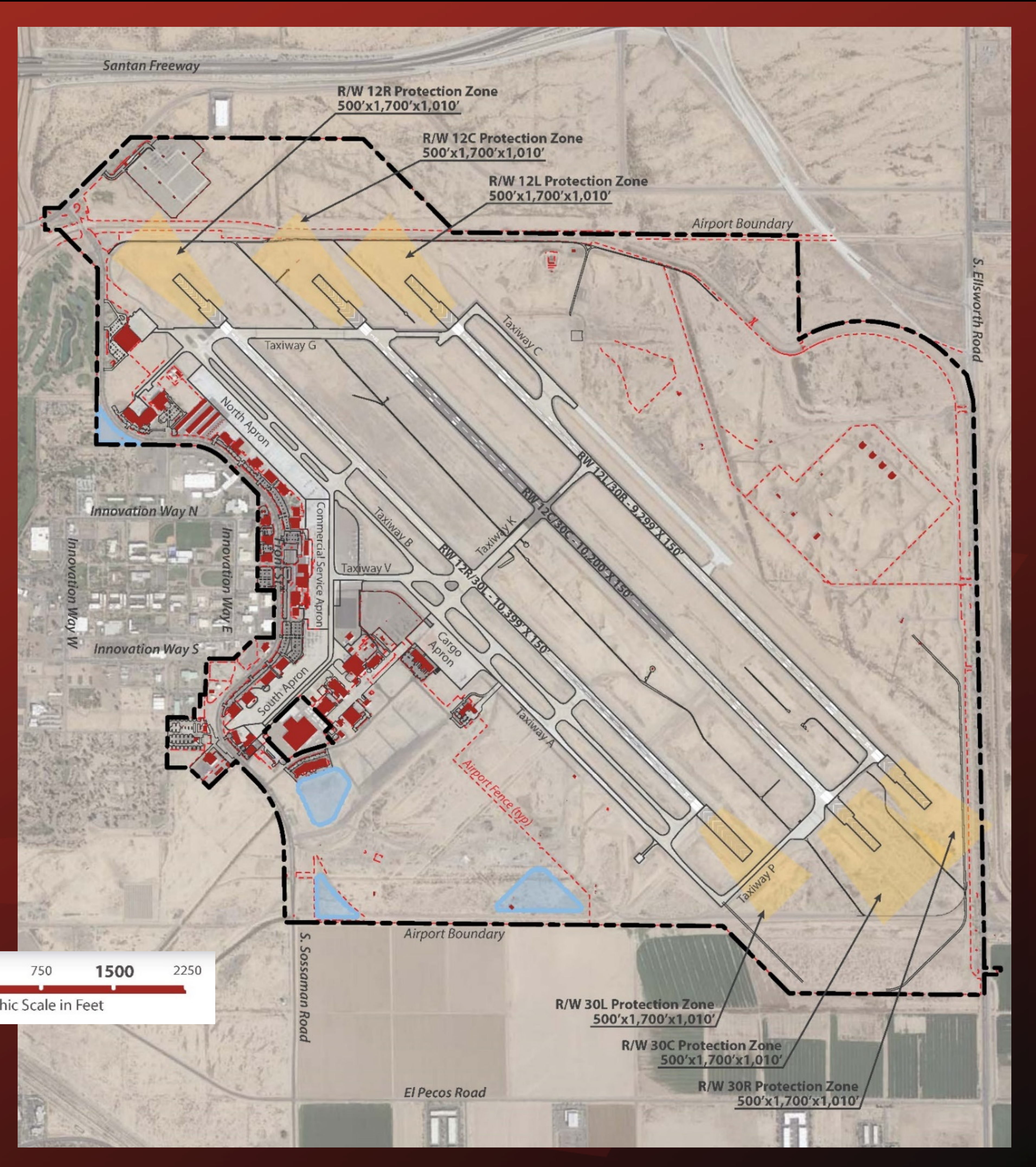
Phoenix-Mesa  
**Gateway**  
Airport Master Plan



# Existing Airport Facilities



Phoenix-Mesa  
**Gateway**  
Airport Master Plan



# Summary of Critical Facility Requirement Considerations

- ✓ Identify potential needs and benefits for runway extension(s)
- ✓ Identify benefits for placement of parallel taxiway improvements
- ✓ Consideration of benefits of improved instrument approach capabilities
- ✓ Passenger terminal
  - Short-term focus on demand driven improvements for existing terminal building
  - Long-term focus on relocated terminal
- ✓ Vehicular access and parking
  - Short-term focus on demand driven improvements for existing terminal area
  - Long-term focus on relocated terminal including support facilities
- ✓ SkyBridge Arizona - incorporate adopted recommendations into master plan
- ✓ General aviation and industrial aviation - continue to program for demand driven facility expansion and improvements



# Airport Master Plan- Forecast Review

## Enplanement Forecast:

2018 Total= 765,325±

| 2023    | 2028      | 2038      |
|---------|-----------|-----------|
| 924,667 | 1,022,420 | 1,245,211 |

## Total Operations Forecast:

2018 Total= 288,921

| 2023    | 2028    | 2038    |
|---------|---------|---------|
| 316,712 | 333,028 | 369,744 |

## Total Based Aircraft Forecast:

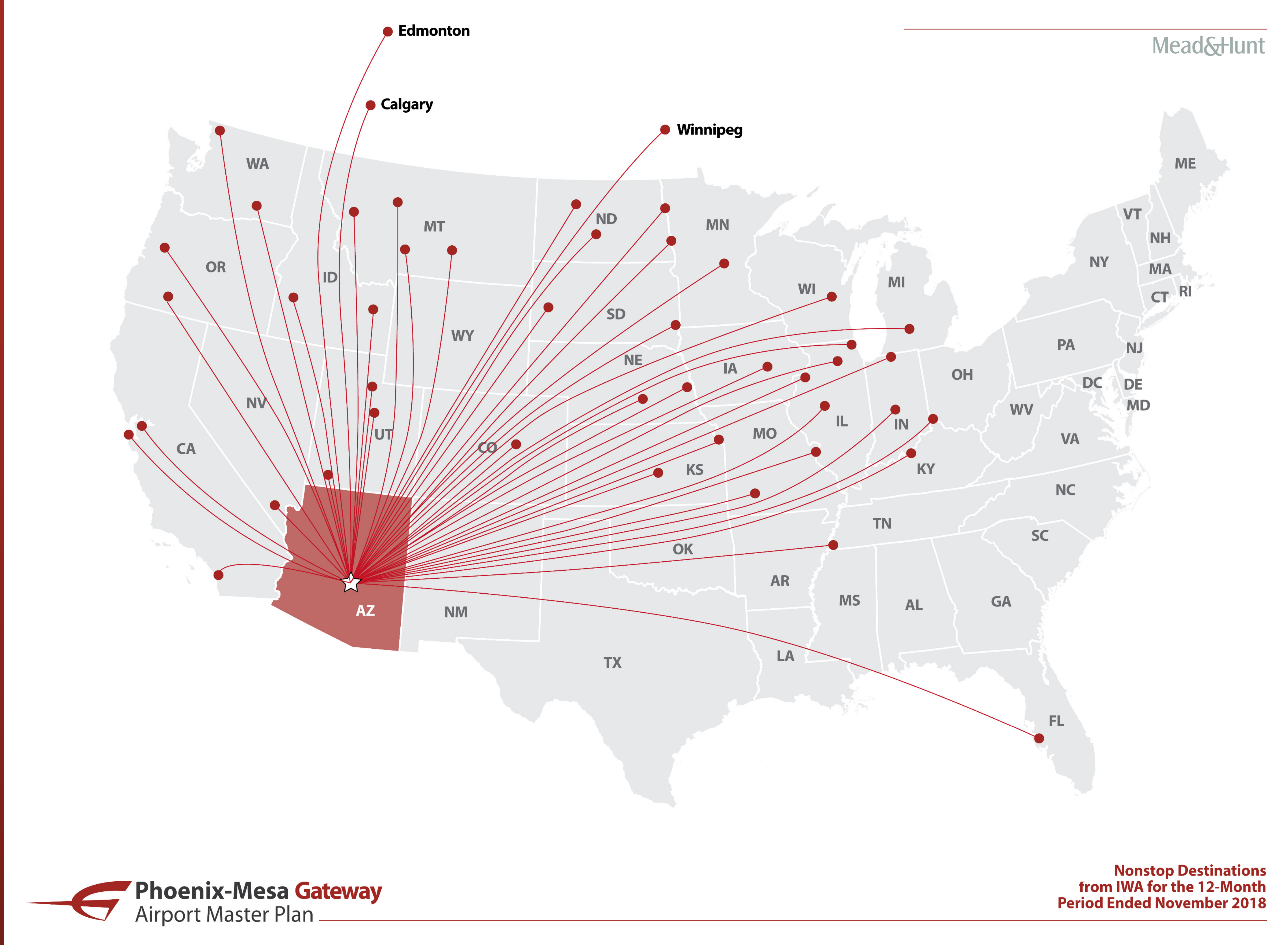
2017 Actual = 109

| 2023 | 2028 | 2038 |
|------|------|------|
| 121  | 126  | 139  |



Phoenix-Mesa  
**Gateway**  
Airport Master Plan

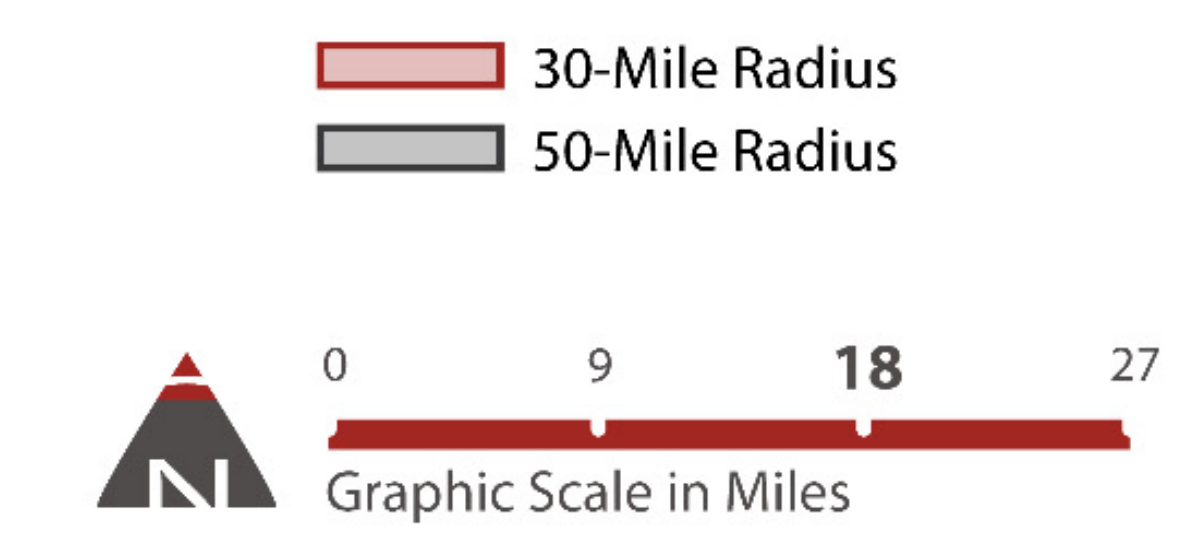
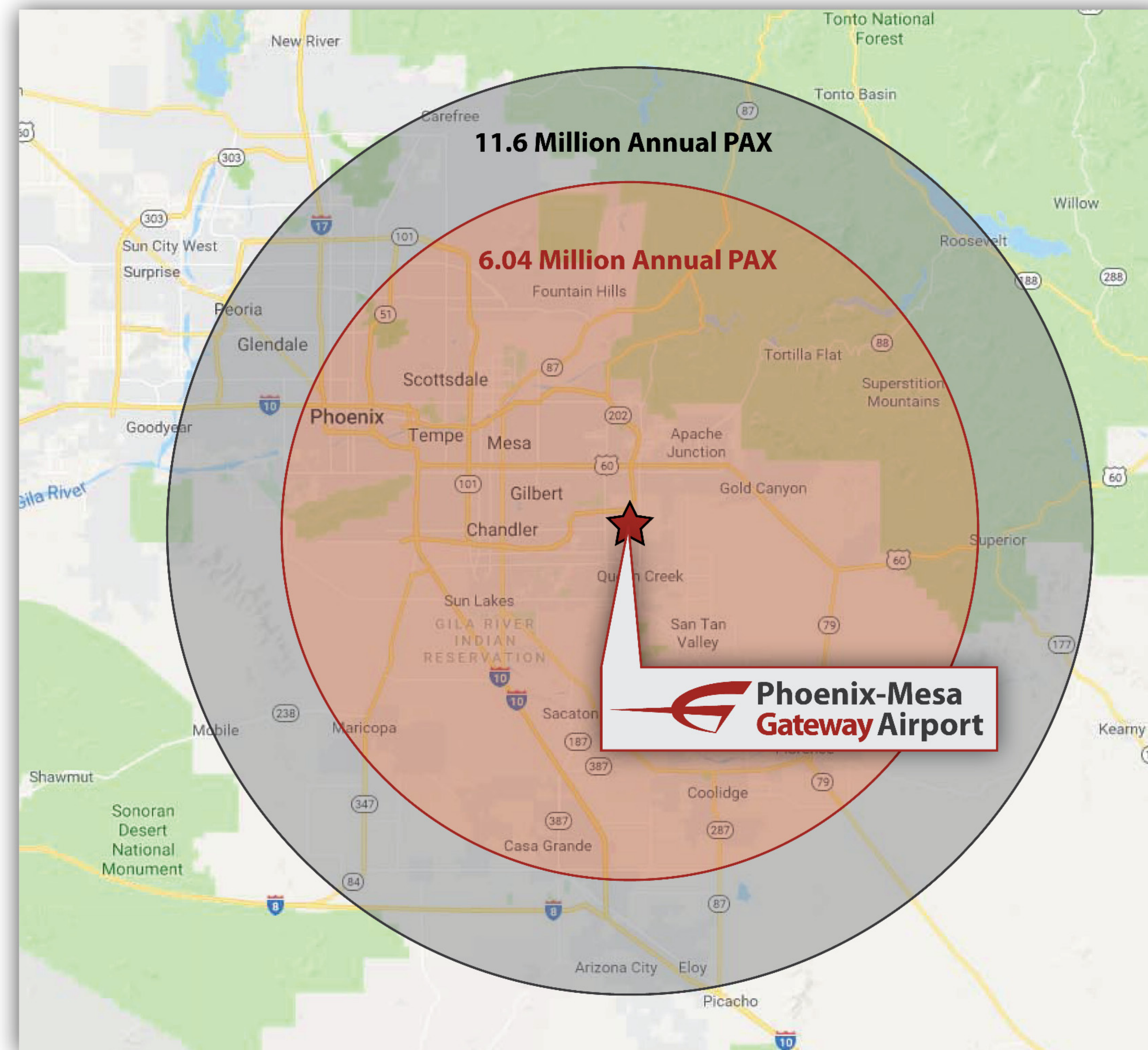
Mead&Hunt



Mead&Hunt

Mead&Hunt

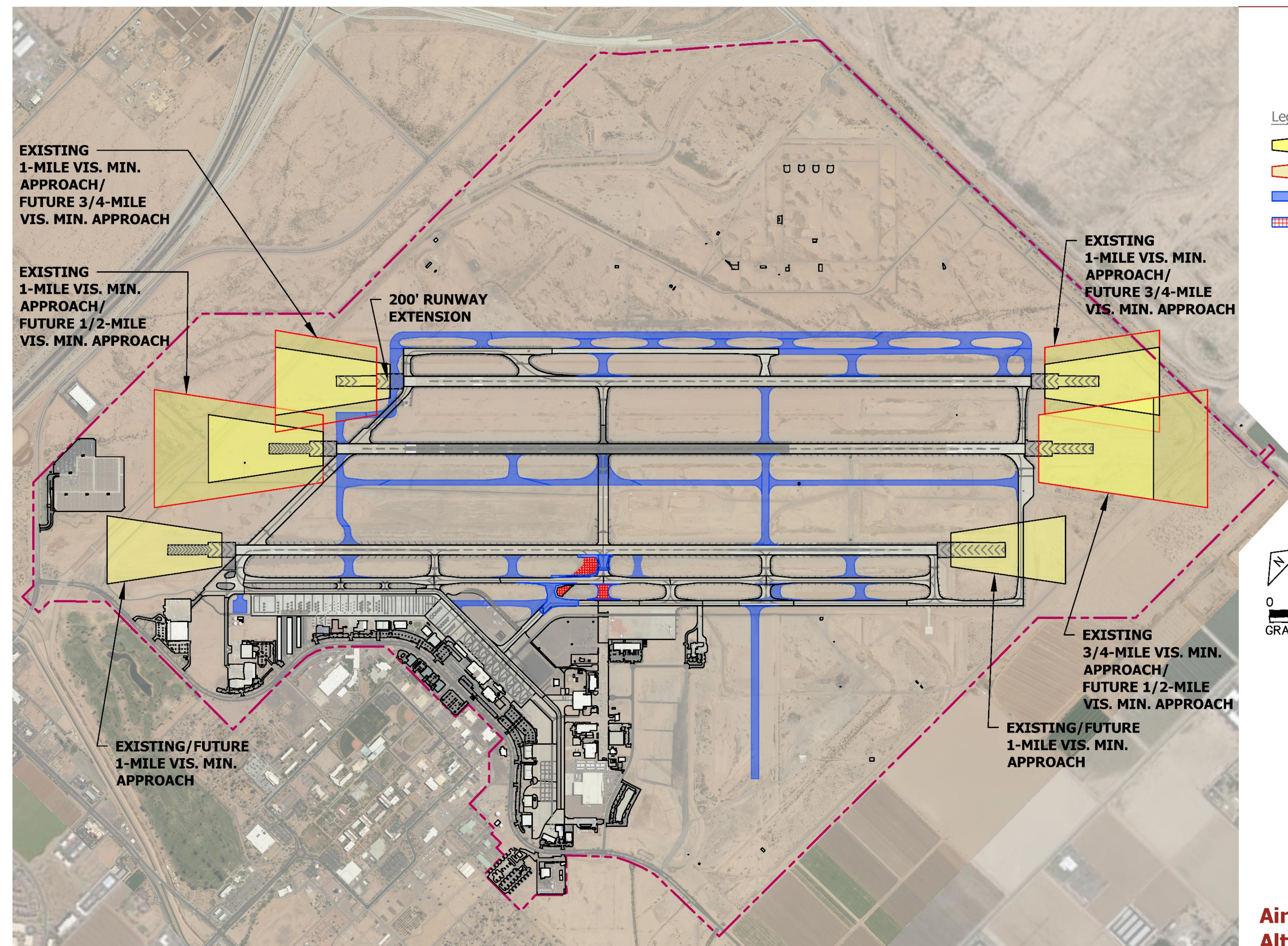




Source: Google Maps, 2018

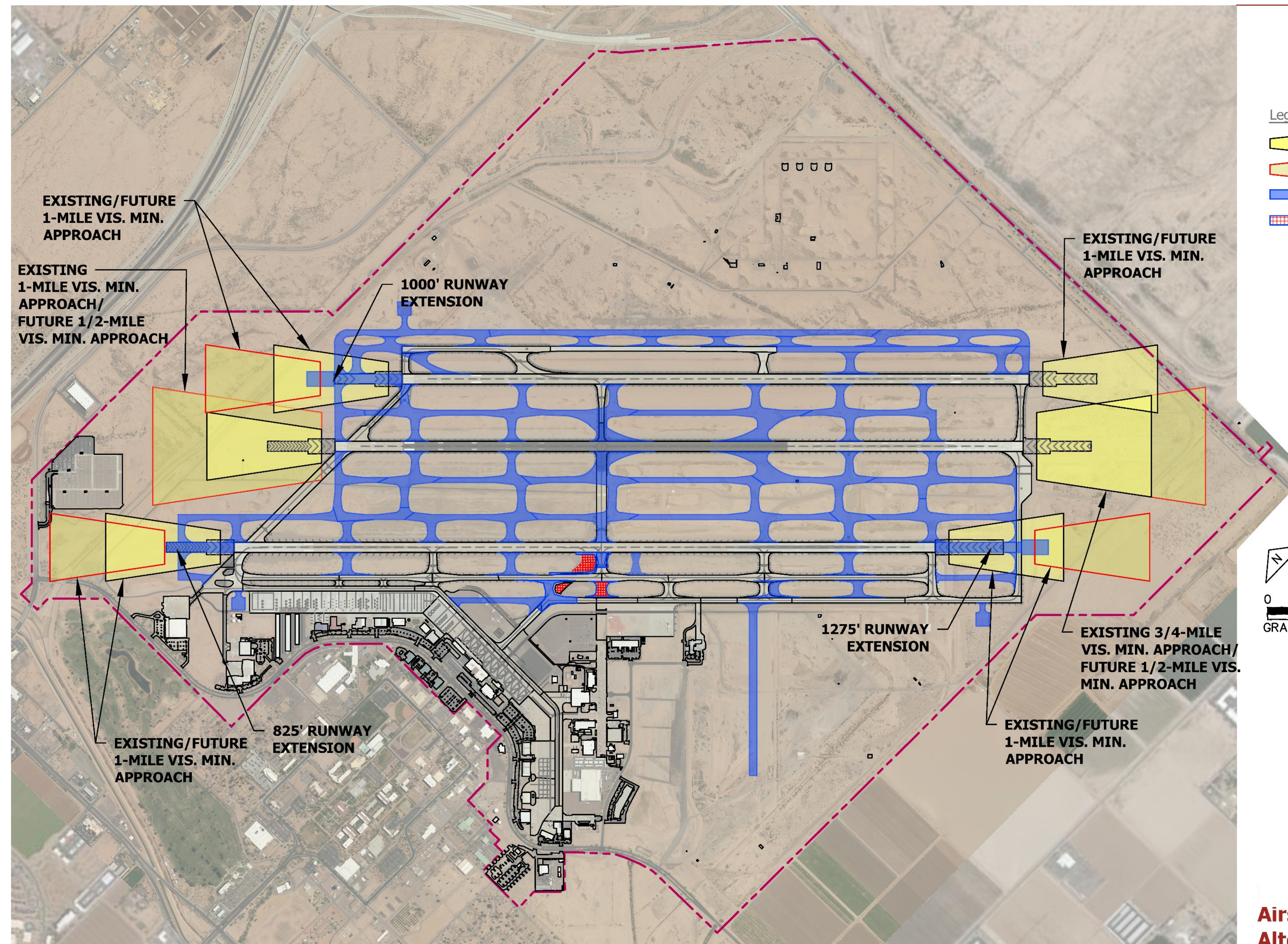
Catchment Area





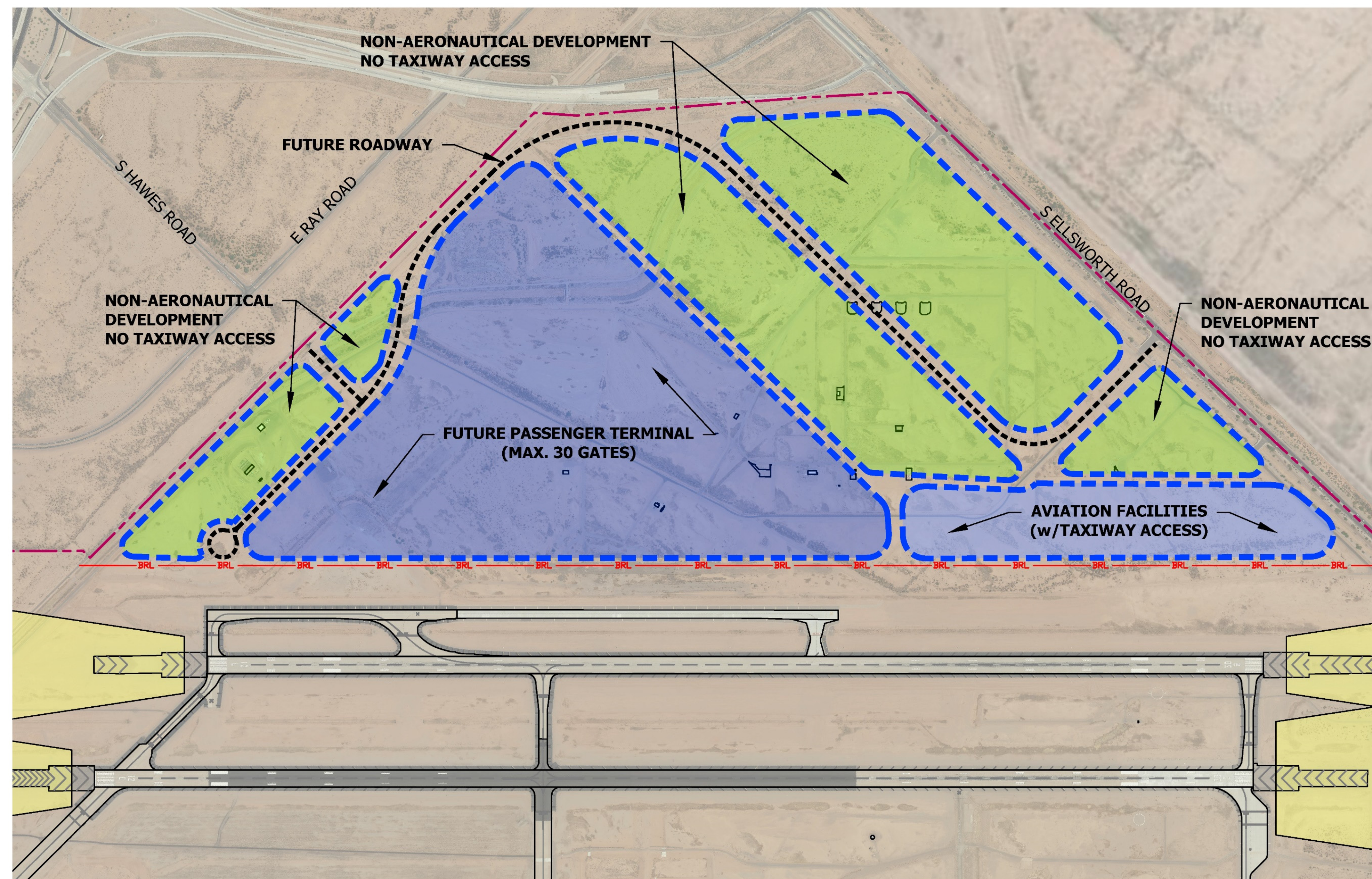
**Phoenix-Mesa Gateway**  
Airport Master Plan

**Airside Development  
Alternative 1  
Provision of Potential Demand  
Driven Improvements**



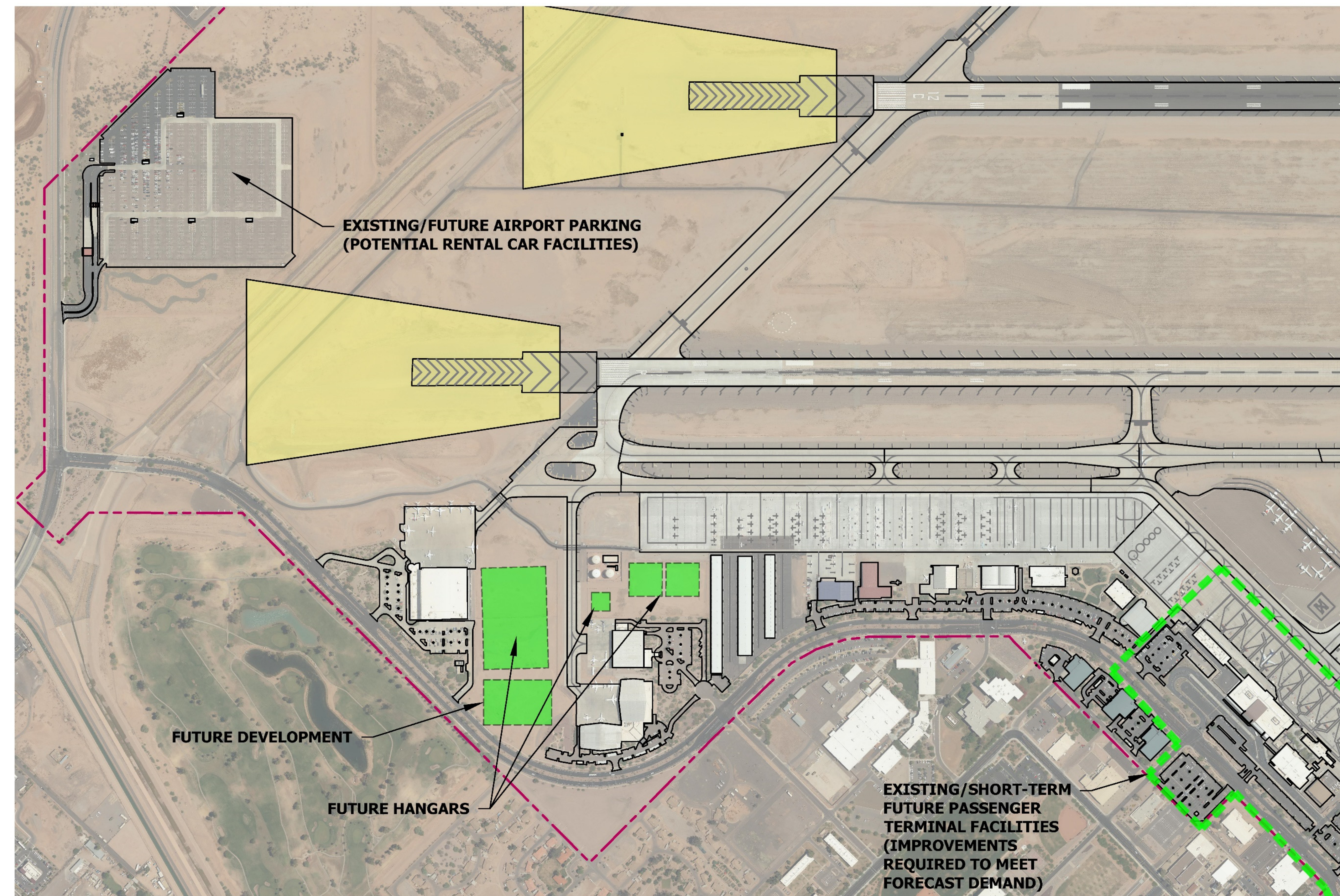
**Phoenix-Mesa Gateway**  
Airport Master Plan

**Airside Development  
Alternative 2  
Protect for Ultimate Potential  
Airside Configuration**



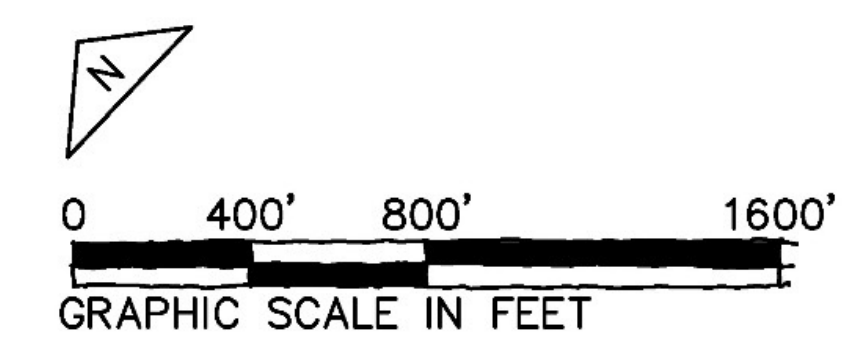
Legend  
Existing Runway Protection Zone

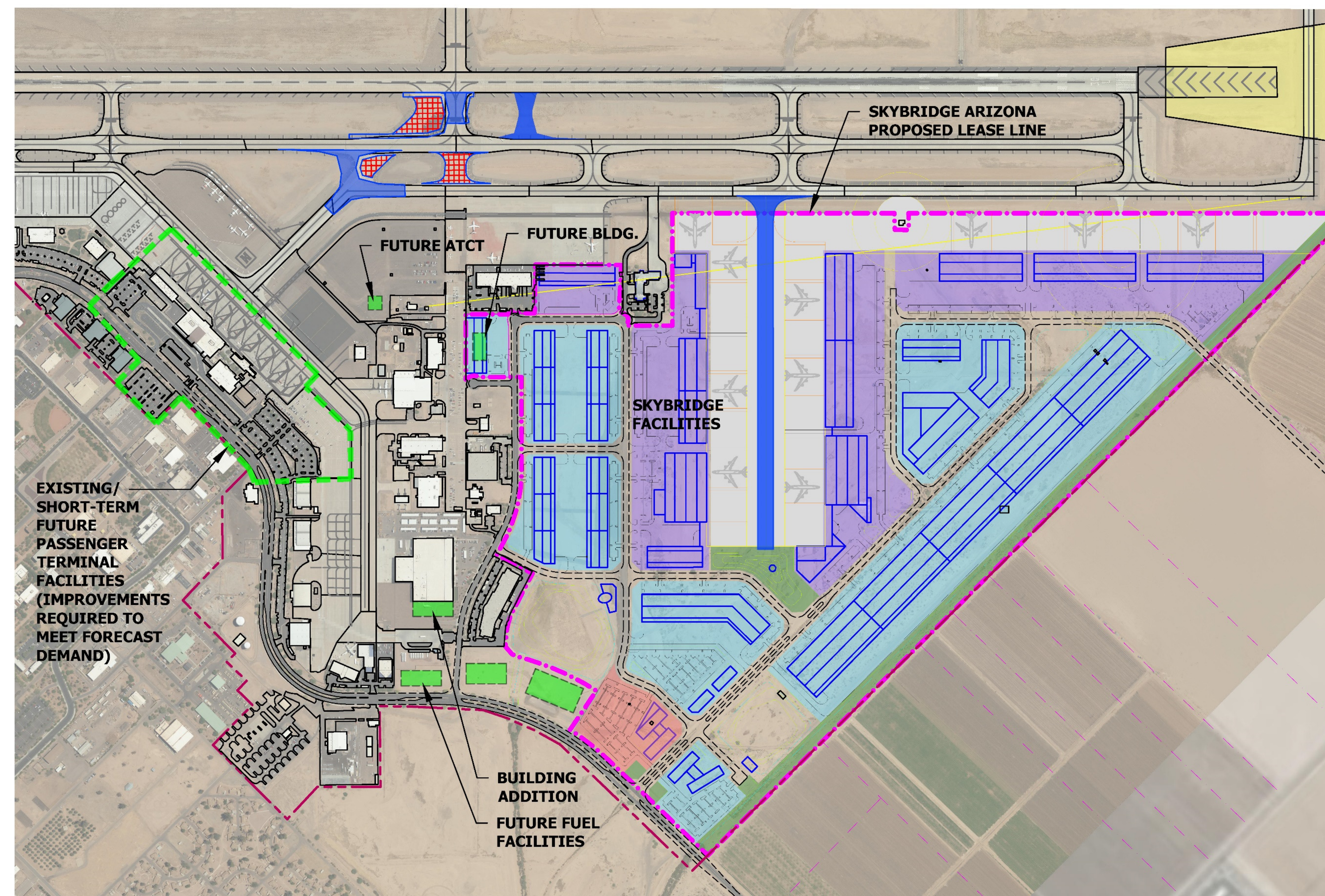
0 500' 1000' 2000'  
GRAPHIC SCALE IN FEET



Legend

- Existing Runway Protection Zone
- Future Buildings/Development





- Legend
- Existing Runway Protection Zone
  - Future Buildings/Development
  - Future Taxiway Pavement
  - Future Taxiway Pavement Removed
  - SkyBridge Arizona Aviation Facilities
  - SkyBridge Arizona w/No Taxiway Access
  - SkyBridge Arizona Proposed Lease Line

