

2 PROPOSED 3D OVERVIEW

PROJECT INFO.



PHOENIX-MESA GATEWAY AIRPORT
TICKETING TERMINAL RENOVATION
6033-1 SOUTH SOSSAMAN ROAD
MESA, ARIZONA 85212

COMPANY INFO.



STUDDIFORD TECHNICAL SOLUTIONS
1698 OLD STAGE ROAD
ALEXANDRIA VIRGINIA, 22308

REVISIONS

REV #	DESCRIPTION	DATE

NOTE

CONTRACTOR TO VERIFY ALL DIMENSIONS AND DEVICES BEFORE DEVELOPMENT OF SHOP DRAWINGS AND PROCUREMENT/MODIFICATION OF EQUIPMENT

FILENAME: D SIZE TEMPLATE.DWG

6/13/2024 12:38:43 PM

DRAWING TITLE

PROPOSED 3D OVERVIEW

PROJECT NUMBER:	00000
DATE:	06/13/2024
DRAWN BY:	G.Wongen
CHECKED BY:	BJM
APPROVED BY:	BJM
SHEET NUMBER:	

B-004

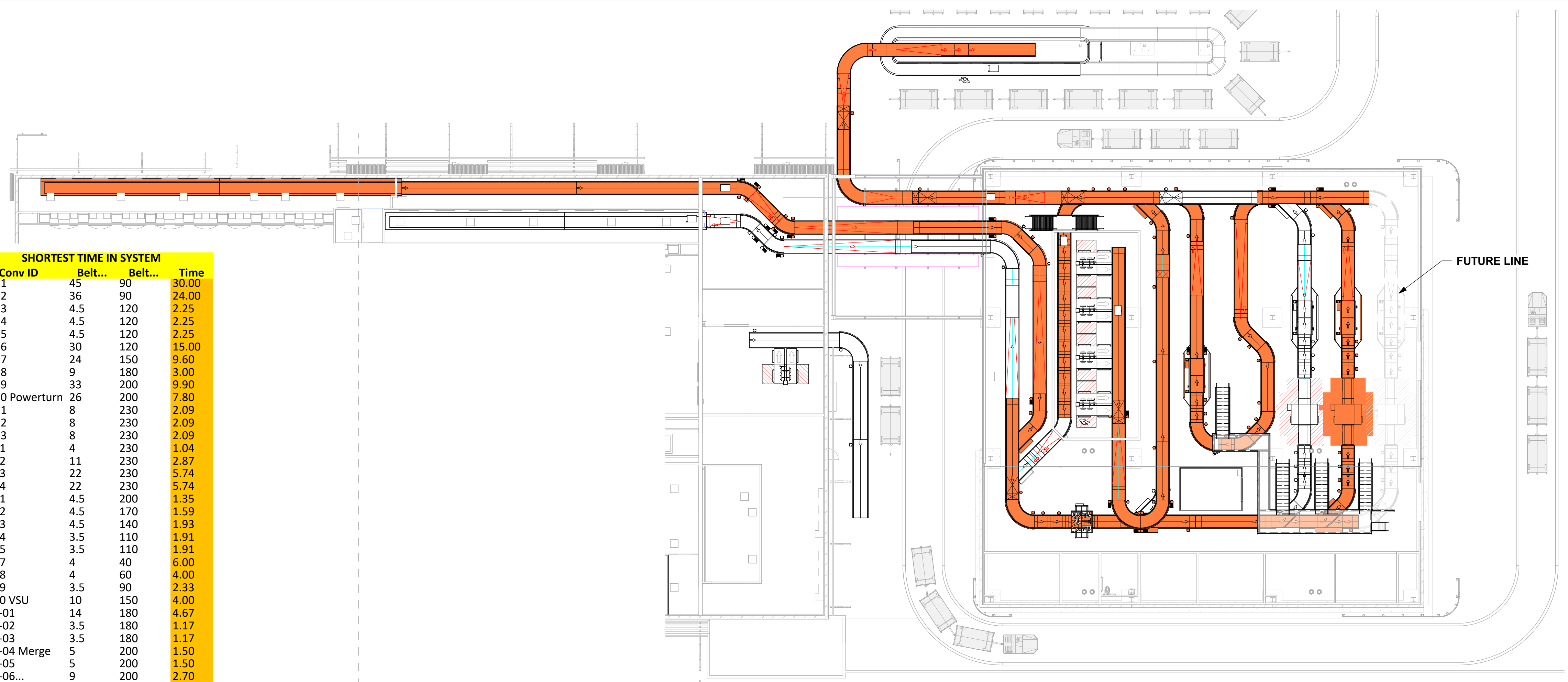
SCALE

COLOR LEGEND

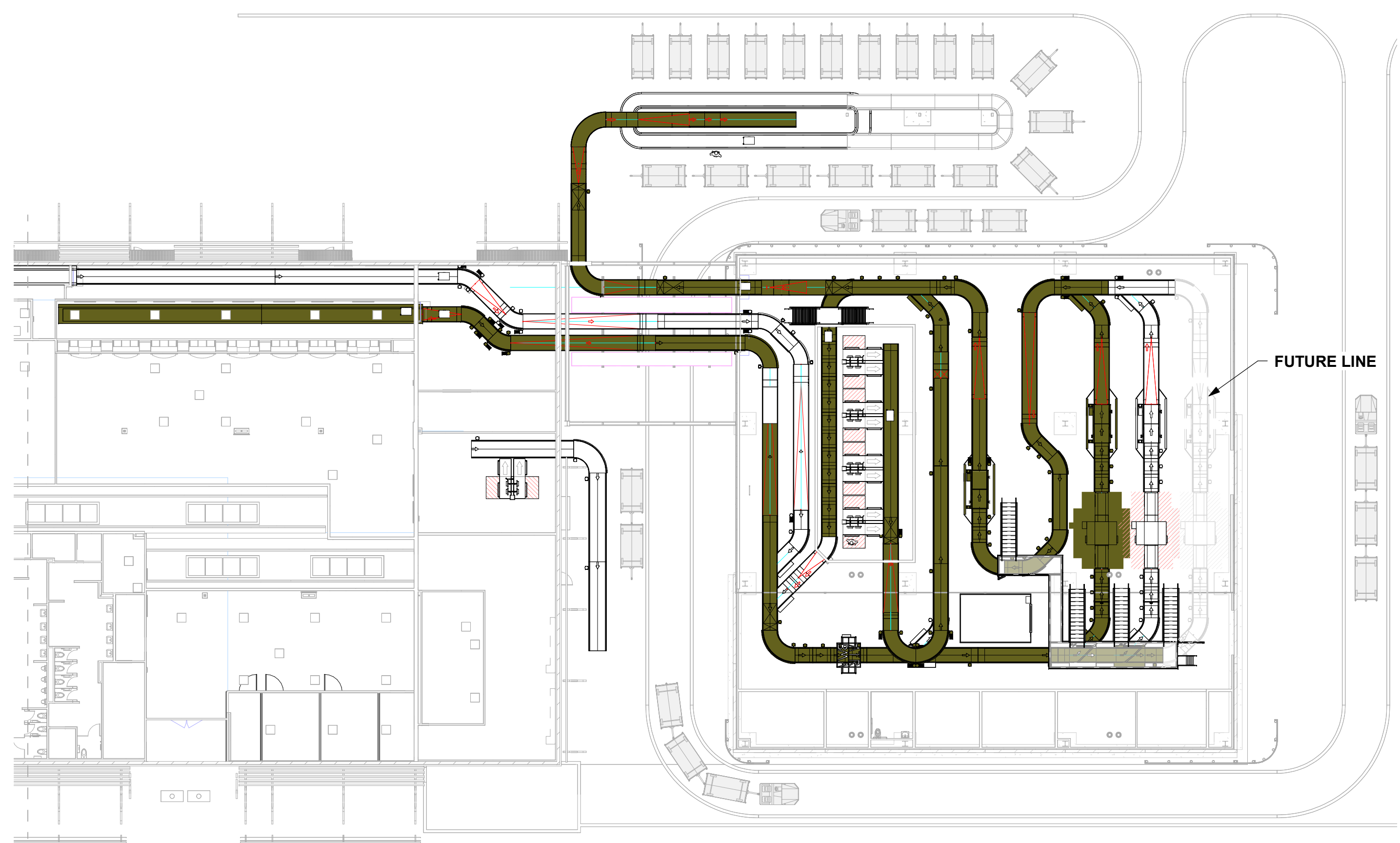
- LONGEST TIME IN SYSTEM
- SHORTEST TIME IN SYSTEM

LONGEST TIME IN SYSTEM			
Conv ID	Belt...	Belt...	Time
CS1-01	45	90	30.00
CS1-02	45	90	30.00
CS1-03	45	90	30.00
CS1-04	41	90	27.33
CS1-05	4.5	120	2.25
CS1-06	9.5	120	4.75
CS1-07	4.5	120	2.25
CS1-08	31	120	15.50
CS1-09	26	150	10.40
CS1-10	4.5	180	1.50
CS1-11	5.5	180	1.83
CS1-12	4.5	180	1.50
CS1-13	33	180	11.00
CS1-14	4	180	1.33
CS1-15	4.5	180	1.50
CS1-16	5	180	1.67
CS2-09	14	200	4.20
CS2-10	9	230	2.35
CS2-11	8	230	2.09
CS2-12	8	230	2.09
CS2-13	8	230	2.09
SF1-01	4	230	1.04
SF1-02	11	230	2.87
SF1-03	22	230	5.74
SF1-04	22	230	5.74
SS2-01	4.5	200	1.35
SS2-02	4	170	1.41
SS2-03	4.5	140	1.93
SS2-04	3.5	140	1.50
SS2-05	3.5	110	1.91
SS2-06	4	40	6.00
SS2-07	4	60	4.00
SS2-08	3.5	90	2.33
SS2-09	3.5	120	1.75
SS2-10 VSU	10	150	4.00
OSR2-01	14	180	4.67
OSR2-02	3.5	180	1.17
OSR2-03	3.5	180	1.17
OSR2-04...	9	200	2.70
OSR2-05	16	200	4.80
OSR2-06...	9	200	2.70
OSR2-07	25	200	7.50
OSR2-08	4.5	200	1.35
OSR2-09	5	200	1.50
OSR2-10	4.5	200	1.35
OSR2-11	12.5	200	3.75
OSR2-12	4.5	200	1.35
OSR2-13	4	200	1.20
OSR2-14	4.5	200	1.35
OSR2-15	4	200	1.20
OSR2-16	9	200	2.70
OSR2-17	4	200	1.20
OSR2-18	4	200	1.20
OSR2-19 VSU	10	200	3.00
AL1-01	30	200	9.00
AL1-02	9	180	3.00
AL1-03	8	180	2.67
AL1-04	4	180	1.33
AL1-05	4	150	1.60
AL1-06	9	120	4.50
AL1-07	4	90	2.67
AL1-08	4	90	2.67
AL1-09	4	90	2.67
AL1-10	4	90	2.67
AL1-11	4	90	2.67
AL1-12	4	90	2.67
AL1-13	4	90	2.67
AL1-14	4	90	2.67
AL1-15	4	90	2.67
AL1-16	4	90	2.67
AL1-17	4	90	2.67
AL1-18	4	90	2.67
AL1-19	4	90	2.67
CL4-01	22	90	14.67
CL4-02	22	90	14.67
CL4-03	20	120	10.00
CL4-04	9	150	3.60
CL4-05	9	150	3.60
CL4-06	15	180	5.00
CL4-07	22	200	6.60
CL4-08	26	230	6.78
CL4-09	4	230	1.04
CL4-10	4.5	230	1.17
CL4-11 merge	5	200	1.50
CL2-07	25	230	6.52
CL2-08	19	230	4.96
CL2-09	19	230	4.96
CL2-10	10	200	3.00
CL2-11	9	200	2.70
CL1-11	18	180	6.00
CL1-12	9	180	3.00
CL1-13	19	180	6.33
CL1-14	3.5	150	1.40
CL1-15	3.5	120	1.75
CL1-16	17	120	8.50
SS2 total:	447.57		

SHORTEST TIME IN SYSTEM			
Conv ID	Belt...	Belt...	Time
CS2-01	45	90	30.00
CS2-02	36	90	24.00
CS2-03	4.5	120	2.25
CS2-04	4.5	120	2.25
CS2-05	4.5	120	2.25
CS2-06	30	120	15.00
CS2-07	24	150	9.60
CS2-08	9	180	3.00
CS2-09	33	200	9.90
CS2-10 Powerturn	26	200	7.80
CS2-11	8	230	2.09
CS2-12	8	230	2.09
CS2-13	8	230	2.09
SF1-01	4	230	1.04
SF1-02	11	230	2.87
SF1-03	22	230	5.74
SF1-04	22	230	5.74
SS1-01	4.5	200	1.35
SS1-02	4.5	170	1.59
SS1-03	4.5	140	1.93
SS1-04	3.5	110	1.91
SS1-05	3.5	110	1.91
SS1-07	4	40	6.00
SS1-08	4	60	4.00
SS1-09	3.5	90	2.33
SS1-10 VSU	10	150	4.00
OSR1-01	14	180	4.67
OSR1-02	3.5	180	1.17
OSR1-03	3.5	180	1.17
OSR1-04 Merge	5	200	1.50
OSR2-05	5	200	1.50
OSR2-06...	9	200	2.70
OSR2-07	25	200	7.50
OSR2-08	4.5	200	1.35
OSR2-09	5	200	1.50
OSR2-10	4.5	200	1.35
OSR2-11	12.5	200	3.75
OSR2-12	4.5	200	1.35
OSR2-13	4	200	1.20
OSR2-14	4.5	200	1.35
OSR2-15	4	200	1.20
OSR2-16	9	200	2.70
OSR2-17	4	200	1.20
OSR2-18	4	200	1.20
OSR2-19 VSU	10	200	3.00
AL1-01	30	200	9.00
AL1-02	9	180	3.00
AL1-03	8	180	2.67
AL1-04	4	180	1.33
AL1-05	4	150	1.60
AL1-06	9	120	4.50
AL1-07	4	90	2.67
AL1-08	4	90	2.67
AL1-09	4	90	2.67
AL1-10	4	90	2.67
AL1-11	4	90	2.67
AL1-12	4	90	2.67
AL1-13	4	90	2.67
AL1-14	4	90	2.67
AL1-15	4	90	2.67
AL1-16	4	90	2.67
AL1-17	4	90	2.67
AL1-18	4	90	2.67
AL1-19	4	90	2.67
CL4-01	22	90	14.67
CL4-02	22	90	14.67
CL4-03	20	120	10.00
CL4-04	9	150	3.60
CL4-05	9	150	3.60
CL4-06	15	180	5.00
CL4-07	22	200	6.60
CL4-08	26	230	6.78
CL4-09	4	230	1.04
CL4-10	4.5	230	1.17
CL4-11 merge	5	200	1.50
CL2-07	25	230	6.52
CL2-08	19	230	4.96
CL2-09	19	230	4.96
CL2-10	10	200	3.00
CL2-11	9	200	2.70
CL1-11	18	180	6.00
CL1-12	9	180	3.00
CL1-13	19	180	6.33
CL1-14	3.5	150	1.40
CL1-15	3.5	120	1.75
CL1-16	17	120	8.50
SS2 total:	368.59		



1 LONGEST TIME IN SYSTEM LAYOUT
1/16" = 1'-0"



2 SHORTEST TIME IN SYSTEM LAYOUT
1" = 20'-0"

PROJECT INFO.



PHOENIX-MESA GATEWAY AIRPORT
TICKETING TERMINAL RENOVATION
6033-1 SOUTH SOSSAMAN ROAD
MESA, ARIZONA 85212

COMPANY INFO.

Studdiford Technical Solutions, LLC

STUDDIFORD TECHNICAL SOLUTIONS
1698 OLD STAGE ROAD
ALEXANDRIA VIRGINIA, 22308

REVISIONS

REV #	DESCRIPTION	DATE

NOTE

CONTRACTOR TO VERIFY ALL DIMENSIONS AND DEVICES BEFORE DEVELOPMENT OF SHOP DRAWINGS AND PROCUREMENT/MODIFICATION OF EQUIPMENT

FILENAME: D SIZE TEMPLATE.DWG

6/13/2024 12:38:58 PM

DRAWING TITLE

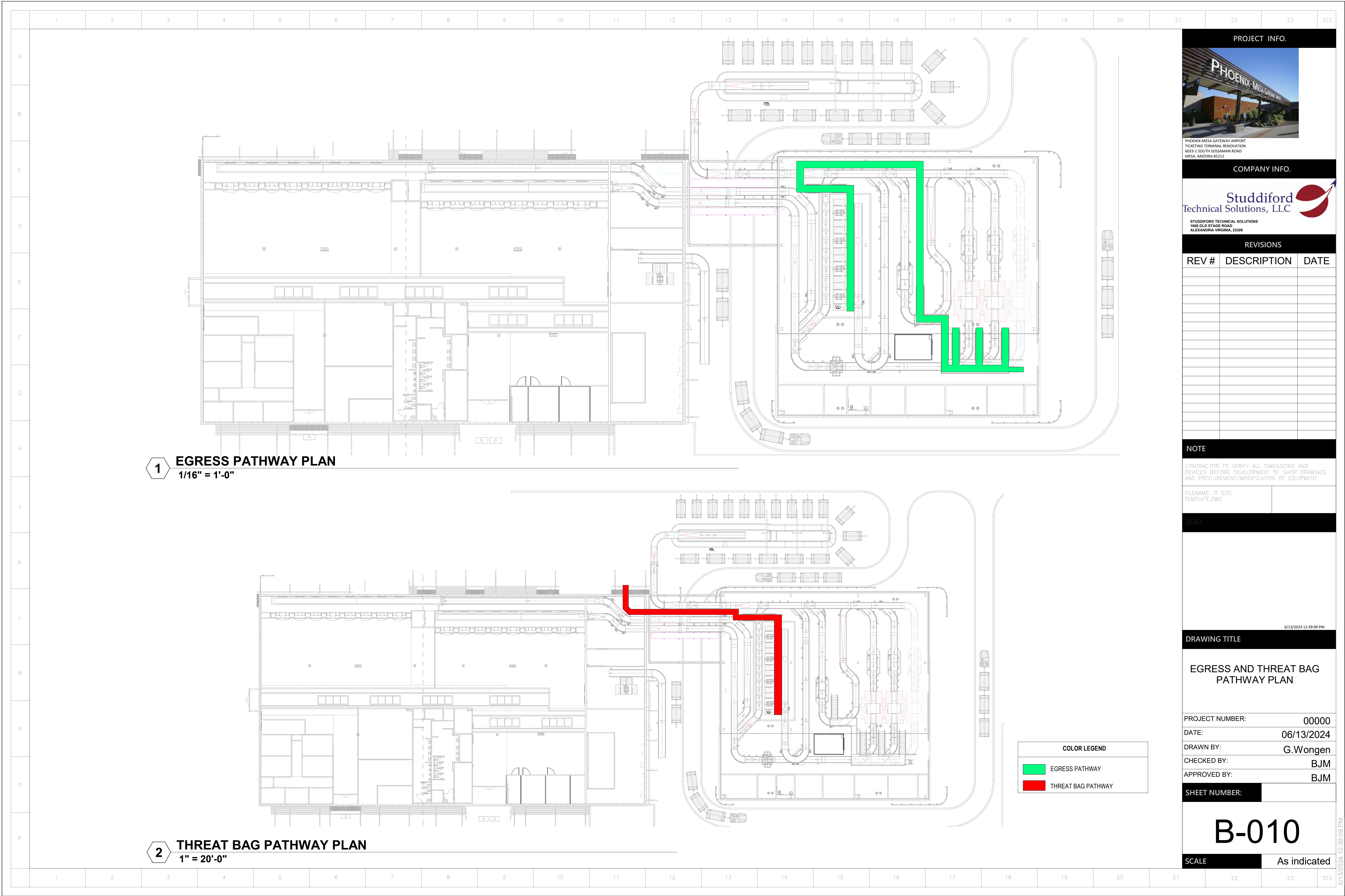
TIME IN SYSTEM LAYOUT

PROJECT NUMBER: 00000
DATE: 06/13/2024
DRAWN BY: G.Wongen
CHECKED BY: BJM
APPROVED BY: BJM

SHEET NUMBER:

B-006



SCALE: As indicated



1 **EGRESS PATHWAY PLAN**
 1/16" = 1'-0"

2 **THREAT BAG PATHWAY PLAN**
 1" = 20'-0"

COLOR LEGEND	
	EGRESS PATHWAY
	THREAT BAG PATHWAY

PROJECT INFO.		
		
PHOENIX-MESA GATEWAY AIRPORT TICKETING TERMINAL RENOVATION 6033-1 SOUTH SOSSAMAN ROAD MESA, ARIZONA 85212		
COMPANY INFO.		
		
STUDDIFORD TECHNICAL SOLUTIONS 1698 OLD STAGE ROAD ALEXANDRIA VIRGINIA, 22308		
REVISIONS		
REV #	DESCRIPTION	DATE
NOTE		
CONTRACTOR TO VERIFY ALL DIMENSIONS AND DEVICES BEFORE DEVELOPMENT OF SHOP DRAWINGS AND PROCUREMENT/MODIFICATION OF EQUIPMENT		
FILENAME: D SIZE TEMPLATE.DWG		
DRAWING TITLE		
EGRESS AND THREAT BAG PATHWAY PLAN		
PROJECT NUMBER:	00000	
DATE:	06/13/2024	
DRAWN BY:	G.Wongen	
CHECKED BY:	BJM	
APPROVED BY:	BJM	
SHEET NUMBER:		
B-010		
SCALE	As indicated	

6/13/2024 12:39:09 PM